

Museum (505.946.1000, www.okeeffemuseum.org) presents an exhibition of works by Georgia O'Keeffe and Ansel Adams on display through September 7.

New Paintings. A show of new paintings by P.A. Nisbet opens August 8 and a solo show for Sharron Evans begins August 22 at Meyer East Gallery (505.983.1657, www.meyereastgallery.com).

Pauline Ziegen. Abstracted landscape paintings by Ziegen hang August 8-21 at Karan Ruhlen

Gallery (505.820.0807, www.karanruhlen.com).

Rodney Hatfield. Selby Fleetwood Gallery (505.992.8877, www.selbyfleetwoodgallery.com) presents a solo show of Hatfield's paintings August 15-28.

Signs of the Times. A show of new works by Annie Dover, Gordon Inyard, and Desmond O'Hagan opens August 1 and a solo show for Craig Nelson begins August 29 at Peterson Cody Gallery (505.820.0010, www.petersoncodygallery.com).

Silk Paintings. The Silk Painters International show (www.silkinsantafe.com) takes place August 3-10 at the Scottish Rite Masonic Temple.

Variety Shows. Deloney Newkirk Galleries (505.992.2850, www.deloneynewkirk.com) presents a solo show of new works by Diane White August 1-15; a group show featuring Terry Craig, Michelle Y. Williams, and Lance Green opens August 15; and a one-man show featuring Jamie Chase begins August 29 at the gallery's 699 location.

HIGHLANDS ART GALLERY

Proudly Represents Howard Friedland

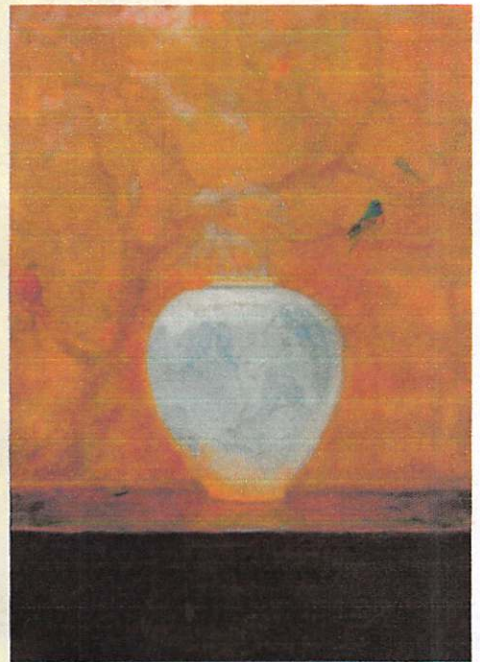


View from the Boat Dock (Lake Como, Italy) 9x12 plein air oil



The "Boating Party" Cafe (France) 10x12 plein air oil

Chester Village Square, 54 Main Street, Suite 3
Chester, NJ 07930
(908) 879-1610 • www.highlandsartgallery.com



▲ ASCENSION II BY DIANE WHITE AT DELONEY NEWKIRK GALLERIES IN SANTA FE.

Western Art. Medicine Man Gallery (505.820.7451, www.medicinemangallery.com) presents western landscape paintings by Howard Post August 1-18; new works by Oreland Joe and Shonto Begay from August 22 through September 7; and the 10th annual Maria Martinez and Family show and sale from August 15 through September 15.

TAOS • R.C. Gorman. An auction of Gorman's estate takes place August 20-21 at the Taos Civic Plaza Convention Center. For more information contact R.C. Gorman Gallery at 575.758.3250 or www.rcgormangallery.com.

Rebecca Krupke/Josiane Childers. A two-person show featuring landscapes by Krupke and Childers opens August 23 at J Fine Art (575.737.0716, www.jfineartgallery.com).

TEXAS

AUSTIN • Canadian Art. A show of 300 works on

CONTINUED, PAGE 30 ►