

Precious Treasures

Diane White's still life paintings honor her favorite things.

BY EMILY VAN CLEVE



Clementines with Blue and White Bowl, oil on linen, 11" x 14"

Delicate blue porcelain vases, finely woven textiles and beautifully hand crafted wood boxes from Asia are some of painter Diane White's most beloved possessions. Through travels to Thailand, Cambodia, Hong Kong and Vietnam, White has collected artistic treasures that not only enhance her Santa Fe home but provide inspiration for her intimate still life oil paintings. She experiences an emotional connection to each of these precious items and enjoys sharing the love she feels for them through her paintings.

Ceramics are of particular interest to White, who has made her own pottery and studied the art of Japanese glazes. "I

love the subtle colors and textures from Japanese wood burning kilns," she says.

Asian vases, bowls and other clay-based art objects are frequent models for White's paintings. These simple, yet elegant, ceramics are sensitively portrayed in her warm and glowing still life paintings. Setting up the perfect scene is an art form unto itself, and she learned how to create magical arrangements from her mentor, Santa Fe painter Roseta Santiago, whom she met last summer at a gallery show.

"Roseta has taught me how to have a concept in mind, not just an idea of how to set everything up," White explains. "I learned that I need to know what I want

to say and tell a story. She is such a masterful painter and wonderful teacher."

One of White's goals is to use color to convey a mood and emotional response to her work. Through the use of subdued warm colors, with points of brightness that draw the eye, she lures the viewer into her thoughtful scenes. Hues are enlivened and made more complex by the addition of complementary colors. Brushstrokes soften or sharpen an edge and draw attention to an area of the painting. "I love the 'painterly style' where you can see the brushstrokes, especially thick paint, on the painting's point of interest," she adds.

White's affinity for painting developed

during the years she lived in Colorado and studied at the Art Students League in Denver. Through classes with Jay Moore, Kim English and Quang Ho, she learned how to paint landscapes, portraits and still life. Although she loved working plein air, she decided to concentrate her work on painting indoors and portraying beautiful art objects in oils.

White works on linen adhered to Masonite and mounts her paintings in wood frames hand made by her husband, Steve Harrington. These elegant, antique-looking frames have a reddish or black background that peaks out from behind a surface of gold leaf.

A resident of Santa Fe for less than two years, White already has found a home for her paintings at Deloney Newkirk Fine Art.

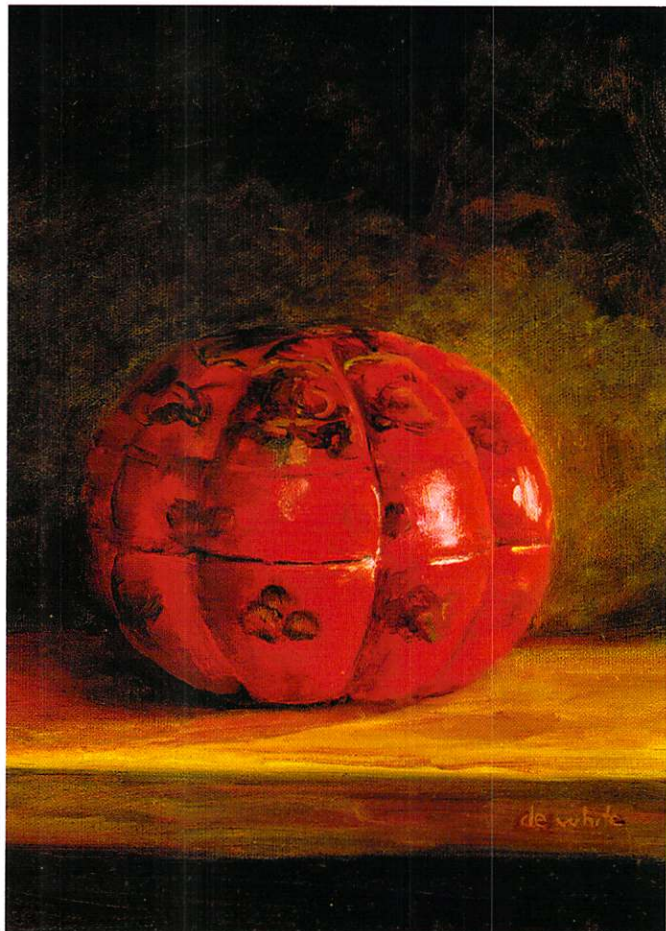
"We're very excited to be representing Diane's work in our gallery," says director Martha Carroll. "At first glance, her paintings appear to be a classical expression of traditional still life objectives—juggling hard and soft edges, color and value relationships with an expressive, painterly approach to the surface. Upon closer examination, her intuitive, feminine view of the subject becomes clear. This ephemeral approach challenges the viewer to abandon realism on an unconscious level and journey with the artist as she weds rational and emotional perceptions."



Diane White's paintings can be seen at Deloney Newkirk Fine Art located at 634 Canyon Road, Santa Fe, New Mexico, 87501. Hours: 10:00 a.m.-5:00 p.m. Monday-Sunday. (505)992-2850 or 1-888-500-4278; (505)992-8240 Fax, www.deloneynewkirk.com, www.dianewhite.net, info@deloneynewkirk.com



Chinese Teapot, oil on linen, 16" x 20"



Red Lacquer Box, oil on canvas, 10" x 8"